

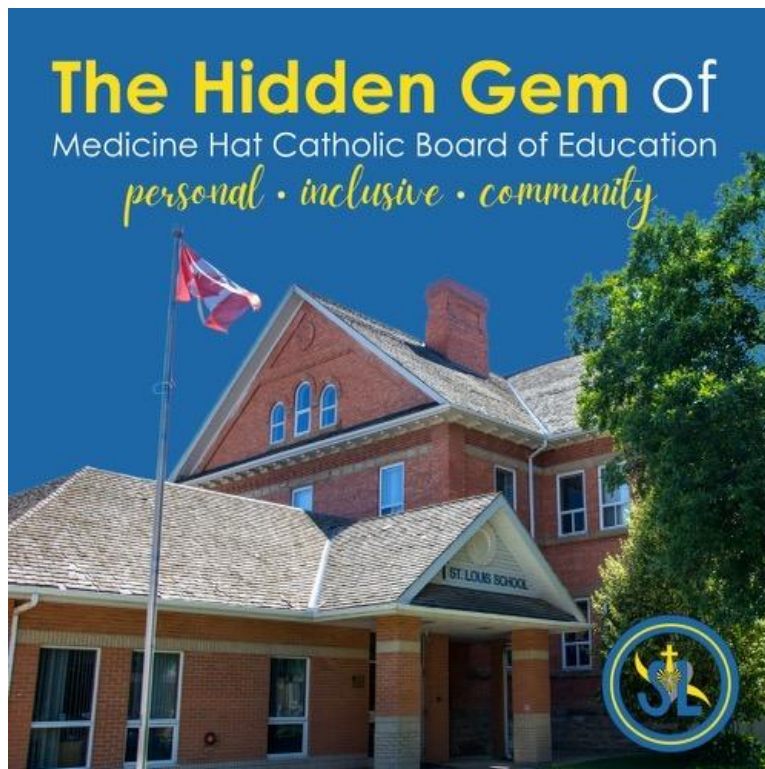


Medicine Hat Catholic
Board of Education

Saint Louis School

School Plan

2022-2023

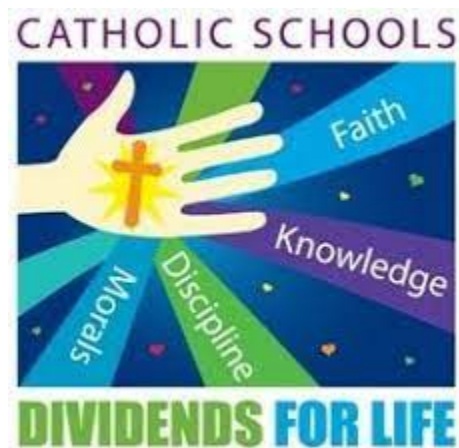


INTRODUCTION

This school plan is a compilation of the ideals expressed by the staff, parents and guardians of St. Louis School in conjunction with the Medicine Hat Catholic Board of Education. As expressed by our Board, this plan particularly focuses on three strategic priorities:

1. Catholicity - growing in the practice of our faith
2. Health and Wellness - physical, mental and emotional well-being
3. Quality Teaching and Learning - best teaching practices and optimal learning

The strategies within this plan are designed to meet the needs of our distinct school community and are specifically meant to provide our students with a high degree of Catholic education that will serve them well throughout their lives. As we endeavor to educate our students through our faith, present and foremost in all that we do, students will receive high quality of educational instruction in academics as well as in physical literacy, social understanding and emotional well-being.



Principal's Message



St. Louis is a very unique school within the MHCBE. I am very proud to be the principal of this school! We are by population the smallest school in our district but historically, the oldest Catholic school, housed in the oldest operating school building in Medicine Hat, built in 1906. Our school specifically serves the Catholic students from the Flats area and the SW and SE Hill areas of Medicine Hat, but accepts all students from any denomination or area of the city who request to attend. Our current student population is exactly 100, not including our students from the Early Learning Program which account for 10 additional children. It is my extreme pleasure to be the administrator of St. Louis School with its dedicated professionals, supportive parents and of course, amazing students.



MEDICINE HAT CATHOLIC BOARD OF EDUCATION

Medicine Hat Catholic Board of Education is a publicly funded school division with over 2600 students in 9 schools: 6 elementary schools, 2 junior high schools and 1 high school.

Medicine Hat is located in Southeastern Alberta and is known as communities of choice. Also known as the sunniest city in Canada, Medicine Hat offers a low cost of living, many amenities and is an ideal place to raise a family.

Our school division ensures the integrity and enhancement of Catholic education. We are a faith-based community that strives to inspire and prepare our students to pray, to learn, to work, to live fully and serve God in one another. Our schools are immersed in faith, offering liturgies, masses, and many celebrations throughout the school year including "Faith Development Days" that enrich the lives of students, our parents and our staff.

Our division offers quality Catholic education with a focus on academic achievement and success for all students.

Our schools operate as professional learning communities through school success teams that promote effective schools in safe and caring environments. We offer strong core academic programming, diverse and inclusive fine arts programming, French immersion, comprehensive co-curricular programming and academy programming in fine arts and sports.

MISSION, VISION AND VALUES

Our Mission

In partnership with family, church and community, we provide Catholic education of the highest quality to our students.

Our Vision

A gospel-centered community committed to learning excellence, Christian service, living Christ.

Our Motto

“Showing the Face of Christ to All”

Our Principles of Practice

In our ministry we are called, always and everywhere, to:

- Model Christ
- Prayer
- Service
- Strive for Excellence

Our Values

We believe that Catholic education is a ministry that is at the heart of the church.

In our ministry, we value and celebrate:

- Teaching and living our Catholic faith.
- Our Catholic traditions.
- Our ability to offer a full range of educational programs for all students.
- The uniqueness of each child.

What do Medicine Hat Catholic schools represent?



Staff, students and families working together,
under our faith, with quality education as our foundation.

ENROLLMENT TRENDS Current Year 100 students total

| Grade | 22-23 | 21-22 | 20-21 | 19-20 | 18-19 | 17-18 | 16-17 | 15-16 | 14-15 | 13-14 |
|-------|-------|-------|-------|-------|-------|-------|-------|-------|-------|-------|
| K | 13 | 14 | 14 | 14 | 20 | 18 | 31 | 11 | 12 | 18 |
| 1 | 17 | 16 | 10 | 20 | 20 | 25 | 18 | 18 | 7 | 15 |
| 2 | 14 | 9 | 15 | 17 | 15 | 19 | 12 | 8 | 16 | 12 |
| 3 | 8 | 17 | 17 | 16 | 17 | 12 | 8 | 16 | 12 | 11 |
| 4 | 18 | 15 | 13 | 17 | 11 | 8 | 14 | 13 | 13 | 13 |
| 5 | 17 | 16 | 12 | 12 | 8 | 13 | 11 | 11 | 12 | 11 |
| 6 | 13 | 13 | 12 | 5 | 10 | 13 | 12 | 12 | 9 | 14 |

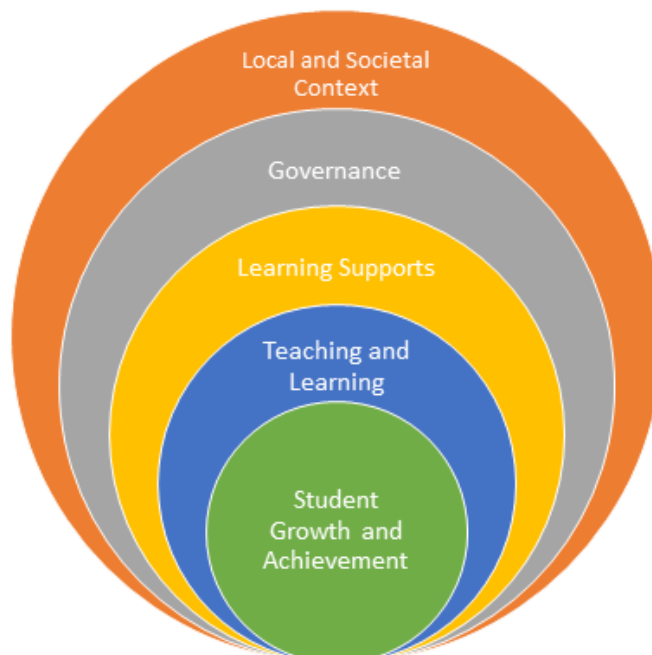
ASSURANCE

Assurance in the education system happens when community members, system stakeholders and education partners engage across five domains:

1. Student Growth and Achievement
2. Teaching and Leading
3. Learning Supports
4. Governance
5. Local and Societal Context

For the purposes of this document, a domain is an area of activity where education partners have specific responsibilities that they are accountable for and provide assurance about. Fundamentally, assurance is reflected in what the public understands, perceives and knows about student growth and achievement, where the quality of the daily interaction between teacher and student is paramount. Assuring the public that the education system is successfully supporting student growth and achievement requires engagement and thoughtful action across all five domains.

Student growth and achievement is the primary purpose of the education system and is the core outcome domain for the assurance framework. The domains of Teaching and Leading, Learning Supports and Governance support and enable Student Growth and Achievement. Local and Societal Context, while a separate domain, operates across and is integrated into the others. For the purposes of description, the domains are considered discrete and separate. However, in practice, they overlap and are interconnected and interdependent, as depicted in the graphic below:



ENGAGEMENT

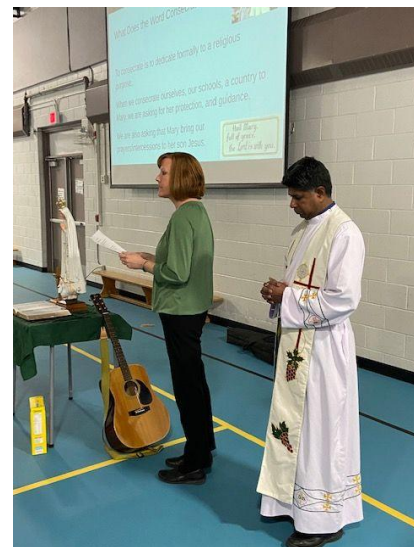
Student Engagement at St. Louis School will be facilitated through the following strategies:

- Best Practices of teacher instruction
- Small grouping, straight grade level mathematics classes for all students
- Literacy intervention using the LLI model as well as various programs such as Haggerty Literacy and online programs such as Mathletics Canada, Raz Kids, Reading Eggs and Reading A to Z
- Opportunities for pupils in grades 5-6 to demonstrate leadership skills in the Student Leadership Group as well as student faith leadership representatives
- Teaching practices that include accommodations, adaptations and a variety of forms for assessment
- AMA Safety Patrol Program for grades 5 and 6 students
- Intramural program for grades 1-6, Games Club for grades 4-6 and Drama Club grades 4-6.



Parent/Guardian Engagement at St. Louis School will be facilitated through the following strategies:

- Second year offering licensed Out of School Care Program.
- Monthly Collaborative Planning Circle meetings (CPC) that involved the parents/guardians of our at risk students and the professional involvement of our School Liaison Counsellor, Occupational Therapist, Speech Pathologist, Inclusive Learning Consultant, Teachers, Learning Assistants, Principal and Associate Superintendent
- An active and welcoming School Council with the option of attending in school meetings or participating virtually online via Google Meets which encourage parental involvement
- Scheduled phone in parent-teacher conferences
- Small group meetings in person after school hours
- Assisting parents with medical appointments, participating in conference calls with pediatricians or other physicians
- Encouraging parent participation in the Assurance Survey or other methods of data gathering
- Regular phone calls and “check-ins” with struggling parents requiring additional supports and communication with the school
- Assisting parents/guardians with Early Learning Program fee reductions if necessitated
- Implementation of home reading programs, or online programs that benefit greatly from parental involvement in the home



STRATEGIC PRIORITIES



Catholicity

- **Weekly School Assemblies that include: prayer, song, references to the liturgical year and celebrations, Fruits of the Spirit, prayer intentions and celebrating the gifts and talents of our students/staff**
- **Google Meet Rosary time, Advent Live, Lent Live**
- **Connecting with the Catholic Community (Parish priests, Sisters of the Seed of the Word, Director of Religious Education)**
- **Catholicity in the fine arts (music, drama and visual arts)**
- **Weekly staff prayer, Prayer and educational segment at each School Council meeting**

Quality Teaching and Learning

- **Grade level groupings for all mathematics periods**
- **Implementation of new programming such as Heggerty, Mathletics,**
- **Mentoring by experienced teachers for Medicine Hat College Students**
- **Professional development for new curriculum (Physical Literacy - Aug.)**

Health and Wellness

- **Designated Wellness champion in the school**
- **Weekly presence of CCT at our school**
- **School Liaison Counsellor twice weekly at our school**
- **Facilitation of medical appointments for our students**

Sisters of Charity of St. Louis Centre

- **Fundraising by students/staff/School Council**

SCHOOL GOALS AND IMPLEMENTATION SPECIFICS



Goal #1

To focus on Mark 1 of the Five Marks of a Catholic School: “Created in the Image of God” by celebrating student success and providing multiple opportunities for students to grow in their faith to come to know Jesus as their personal saviour and lifelong friend.

Goal #2

To use the technology of Google Meets to provide religious instruction and set a climate of Catholicity throughout the school.

Goal #3

To provide assistance to classroom teachers in the area of religious instruction by class visits, “guest speaking”, helping with additional resources, and facilitating members of the Catholic community of Medicine Hat to visit and present at our school.

Implementation Specifics:

- Student of the Week as part of each Google meet assembly
- Terrific Kids held monthly with the sponsorship of Gas City Kiwanis
- Fruit of the Spirit theme and education
- Google assemblies, Advent Live, Lent Live
- Monthly visitations to each classroom during religious studies for a specific intended purpose previously discussed with the classroom teacher
- Attendance of Mass either virtually or physically four times a year (School opening, Advent, Lent, and Year End)

Outcomes:

1. *Medicine Hat Catholic Board of Education students are successful.*





Health and Wellness

Goal #1

To build on the strengths of the CCT programming and intervention by our School Liaison Counsellor by collaborative meetings and ongoing dialogue to build upon common themes and issues.

Goal #2

To provide additional opportunities and increased awareness for students during Mental Health Week (May 2-8, 2022) to increase understanding of mental health and the permission to speak about the mental health issues in our homes and ourselves.

Goal #3

To ensure all students/parents at St. Louis are receiving the physical and emotional support needed by medical and psychological specialists within Medicine Hat.

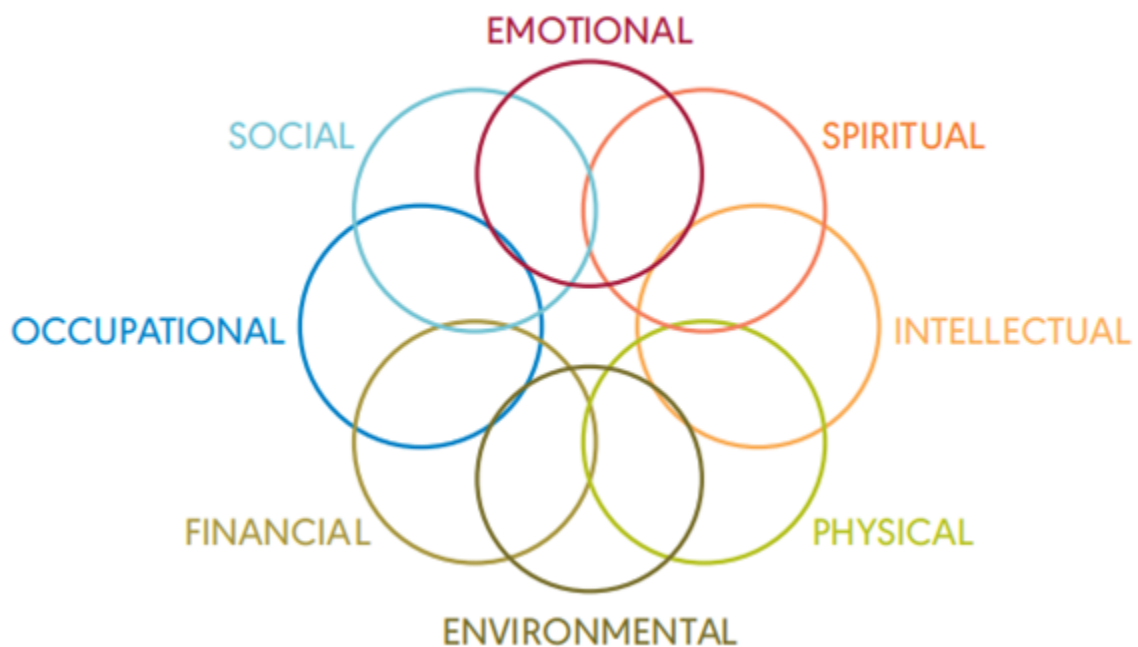
Implementation Specifics:

- Monthly meetings with CCT Wellness Worker at St. Louis.
- Attendance of administrator (and perhaps other staff members) at case conference meetings with medical and or psychological professionals.
- Facilitating appointments for students/parents to see doctors, pediatricians, counselors, etc.
- Weekly check ins with School Liaison Counsellor.
- Monthly communication and cooperation with Child and Family Services.
- Setting up a Mental Health "Fair" day during Mental Health Week in May with Guest speakers and activities at St. Louis School. (CCT facilitator)
- CPC Monthly meetings to develop improved communication and support for At-Risk students.

Outcomes:

- 1. Medicine Hat Catholic Board of Education students are successful.**
- 2. First Nations, Metis and Inuit students in Medicine Hat Catholic Board of Education are successful.**
- 3. Medicine Hat Catholic Board of Education has excellent teachers, school leaders and school authority leaders.**

Health and Wellness Components





Quality Teaching and Learning

Goal #1

To increase intervention in Literacy and Numeracy for all students.

Goal #2

To specifically provide resources and additional intervention instruction for students in grades 1-3 with the support of additional school funding.

Goal #3

To provide opportunities for teachers to collaborate with each other, with learning assistants or other teachers in our division to gain increased knowledge in instructional strategies and programming

Implementation Specifics:

- Leveled Literacy Intervention targeted for those students most strongly identified as below grade level in reading and comprehension.
- Increased communication with parents of low level students through phone calls, emails and meetings.
- Purchasing of the Heggerty Program and other programs to improve phonetic awareness and reading comprehension.
- Administration to cover additional classes for teachers to collaborate with learning assistants or Inclusion Facilitator.
- Use of School PD funds for teachers to observe other grade level teachers in the district or attend additional PD beyond TAPI funding.

Outcomes:

- 1. Medicine Hat Catholic Board of Education students are successful.*
- 2. First Nations, Metis and Inuit students in Medicine Hat Catholic Board of Education are successful.*
- 3. Medicine Hat Catholic Board of Education has excellent teachers, school leaders and school authority leaders.*
- 4. Medicine Hat Catholic Board of Education is well governed and managed.*

RESPONDING TO OUR REQUIRED ALBERTA EDUCATION ASSURANCE MEASURE RESULTS

| School Strategies by Measure | Indicators of Success |
|------------------------------------|---|
| Student Learning Engagement | 86.2% (1.1% higher than provincial ave. and 12.6% higher than last year's school results.) This may be a partial reflection on students receiving in class learning throughout the year, targeted math for each grade level as well as LLI intervention for at-risk students from the Learning Loss Grant. |
| Citizenship | 89.0% (7.3% higher than last year's school result and 7.3% higher than provincial ave. Very High achievement and overall Excellent!) Citizenship will continue to be emphasized through our grade 5-6 Leadership group and participation in various fundraising efforts and social justice education in respect to organizations such as the Medicine Hat Food Bank(Root Cellar), Mission Mexico, Friends of McCoy, Mustard Seed and the St. Vincent de Paul Society. Through educational activities regarding Orange Shirt Day (Truth and Reconciliation Day), Red Wednesday, and Metis Week, students will gain an appreciation for what it means to be a Canadian citizen that recognizes the rights and freedoms for all people. |

| | |
|--|--|
| <p>Education Quality</p> | <p>97.3% (8.3% higher than the provincial ave. and 3.2% higher than school ave. of last year). Through targeted intervention and excellent classroom teaching, the quality of education at St. Louis remained at a superior level of excellence!</p> |
| <p>Welcoming, Caring, Respectful and Safe Learning Environments</p> | <p>89.3% (Alberta average 86.1%). This indicator is strong for our school and efforts to support students and their parents and guardians through a positive school climate, our Anti-Bullying policy, student leadership, and ongoing communication with the home, will continue.</p> |
| <p>Access to Supports and Services</p> | <p>88.6% (7% higher than provincial Ave.) Our strong result in this area is due to a strong emphasis on effective student-teacher relationships, assistance/intervention by our School Liaison Councillor, school based CPC meetings, collaboration with community health organizations such as Bridges, the Diagnostic Clinic and local pediatricians.</p> |
| <p>Parental Involvement</p> | <p>83.5% (21.3% higher than last year's school results! 4.7% higher than the provincial ave). Last year this was an area of concern for our school which was certainly affected by COVID restrictions. Last year's result was excellent. Parents are now able to be more visible inside of our school</p> |

Parental Involvement

building with more opportunities for parental involvement in school functions such as dances, book fair, bingo, games and movie nights. At home initiatives such as home reading programs, online math and phonics programs for parental assistance have also been incorporated.



RESPONDING TO THE SUPPLEMENTAL ALBERTA EDUCATION ASSURANCE MEASURES

| | |
|--|--|
| Lifelong Learning | 87.3% (7.3% higher than last year's school result and 6.3% higher than provincial ave. <u>Excellent</u> overall.) |
| Program of Studies | 87.1% (slightly above last year's results and 4.2% higher than prov. Ave. <u>Excellent</u> overall.) |
| Program of Studies-At-Risk Students | 89% (Maintained from last year at the school level and 7% higher than provincial ave. <u>Good</u> overall.) |
| Safe and Caring | 90.9% (Maintained from last year and 2% higher than provincial ave. <u>Excellent</u> overall.) From ELP to grade six our students are provided with a small community environment in which staff are knowledgeable of all students and endeavor to create a caring place for all. |
| Satisfaction with Program Access | 84.7 (Slightly down from school results last year but 12% higher than prov. Ave. <u>Excellent</u> overall.) |
| School Improvement | 90.8% (slightly down from school results last year but 16.6% above the provincial ave. <u>Excellent</u> overall.) |
| Work Preparation | 89.9% (4.4% above school results last year and 5% above the provincial ave. <u>Excellent</u> overall.) |

COMMUNICATION

Stakeholders are communicated with in a variety ways through our school:



CONTACT US

St. Louis School

403-527-7242

<https://www.stlouisschool.ca>

Ron Blackmer, Principal

ron.blackmer@mhcbce.ab.ca

